

## your very own Health Equity Report Card for San Joaquin County, CA

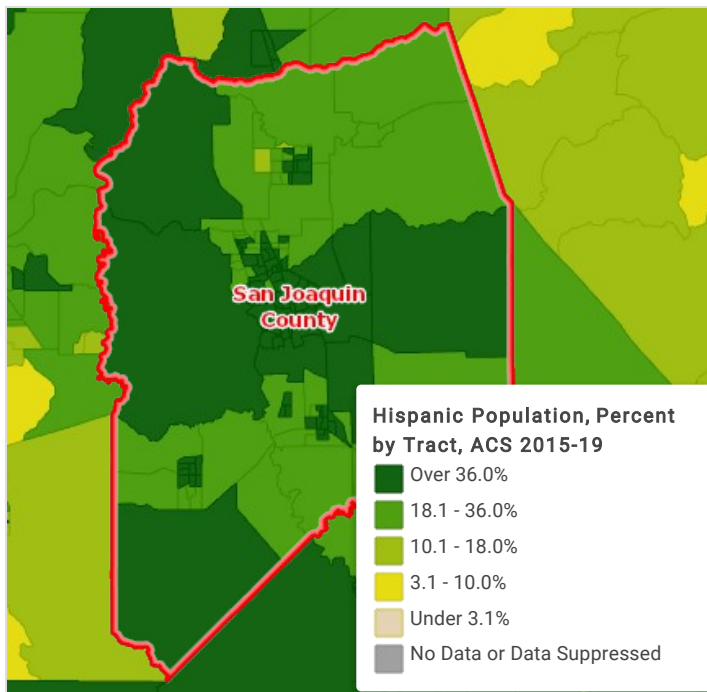


**In San Joaquin County, 1 in 2 kids and 1 in 2 adults are Latino.**

Latino communities vary in their access to quality child care and education, affordable housing, transportation options, green space, healthy food options, and healthcare - all of which are necessary to stay healthy and thrive. These differences in opportunity result in health disparities that are evident between different populations and geographic areas.



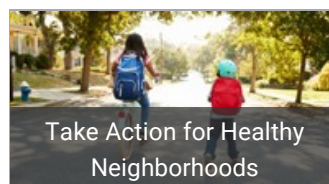
**Latinos in your county face more socio-economic barriers and poor health outcomes than non-Latino Whites.**



	Latino	Non-Latino White
Children in Poverty	23.71%	9.93%
Median Household Income	\$55,282	\$74,162
No High School Diploma	35.97%	19.53%
Uninsured Population	9.27%	4.07%
Teen Birth Rates (per 1,000 pop.)	59.10	23.40
Asthma Prevalence (state)	11.3%	15.6%
Infant Mortality (per 1,000 birth)	5.00	5.60
Mortality - Cancer (per 100,000 pop.)	123.5	169.0
Motor Vehicle Crash Death Rate (per 100,000 pop.)	16.1	18.6
Youth Obesity (state)	20%	10%



**You can use this Salud America! Health Equity Report Card to find socioeconomic and health issues in your county, then help drive community change in your area!**

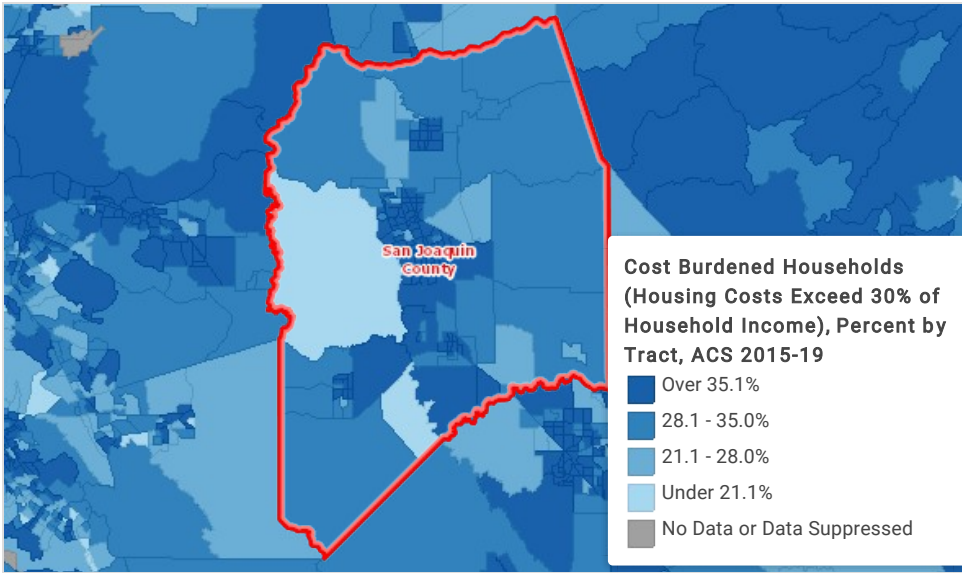


# Housing

A history of discriminatory housing policies and inequitable distribution of resources and services contribute to a widening socioeconomic gap, downward mobility, and poor mental and physical health among Latinos. [LEARN MORE](#)

## Cost-Burdened Households

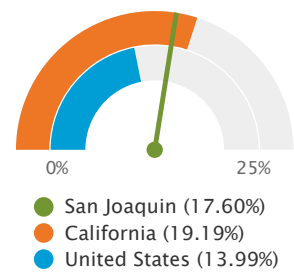
In San Joaquin County, 38.43% of people are disproportionately burdened by higher housing costs (greater than 30% of household income). In your county, 43.38% of housing is renter-occupied. Of households spending more than 30% of household income on housing costs, 51.79% are rental households.



## Severely Cost-Burdened

In San Joaquin County, 17.60% of people are severely cost-burdened, meaning they pay more than 50% of their annual income on housing. These families have less expendable income for healthy food, transportation, preventative healthcare, childcare, tutoring, higher education, museums, professional development, investing in small business, etc.

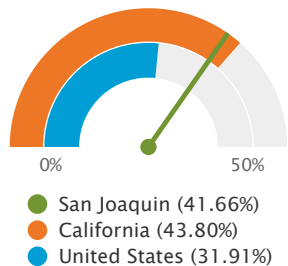
Percentage of Households where Housing Costs Exceed 50% of Income



## Substandard Housing

In San Joaquin County, 41.66% of housing units have one or more substandard conditions (lacking complete plumbing facilities, lacking complete kitchen facilities, with more than 1 occupant per room, and housing cost burden among renters and owners).

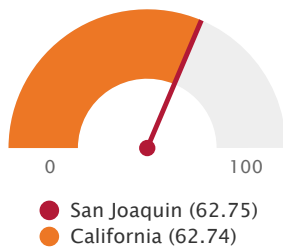
Occupied Housing Units with One or More Substandard Conditions, Percent



## Hours per Week at Average Wage Needed to Afford 2-Bedroom

In order to afford the average-priced 2-bedroom home in San Joaquin County, a person would have to work 62.75 hours per week at average wage.

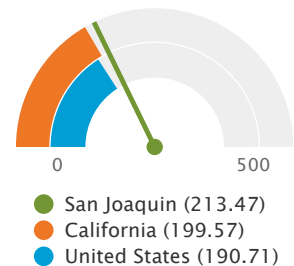
Hours per Week at Average Wage to Afford 2-Bedroom



## Mortgage Lending

In San Joaquin County, there are 213.47 home purchase loan originations per 100,000 population. Of the total number of home purchase loan originations, 29.90% were for Latinos compared to 42.40% for non-Latino Whites, and 10.55% were for under \$120,000 compared to 62.78% for over \$200,000.

Home Loan Origination Rate per 10,000 Pop.



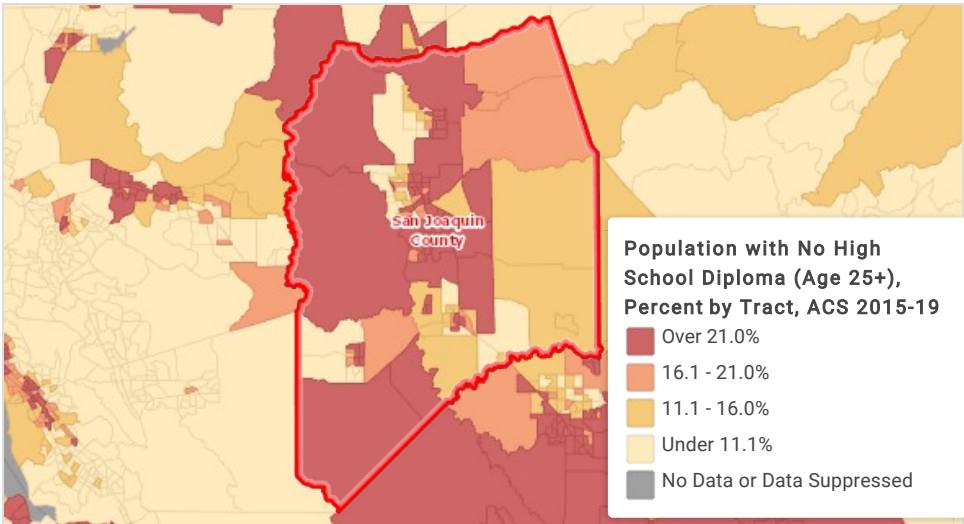
- [Read about how a healthcare organization helping cure unstable housing.](#)
- [Read about how housing costs impact health care.](#)

# Schools

Latinos in underserved communities lack access to quality early education and education, thus are robbed of the crucial foundation required to avoid poverty, unemployment, and other social and economic barriers throughout the lifespan. [LEARN MORE](#)

## No High School Diploma

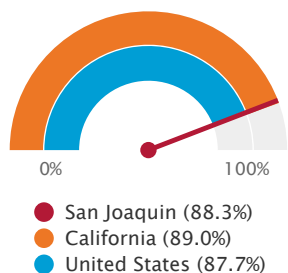
In San Joaquin County, 20.72% of persons aged 25 and older do not have a high school diploma (or equivalency). As you can see, there are disparities by census tract, which is a good indicator there are also disparities health, social, and economic outcomes. Interventions to improve high school graduation rates need to begin in the early years.



## High School Graduation & Dropouts

In San Joaquin County, the high school graduation rate is 88.3%. 3,590 of the population ages 16-19 are not in school and not employed.

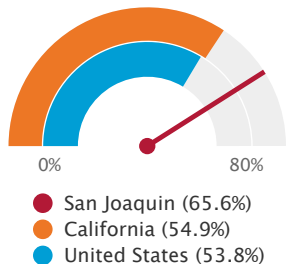
Adjusted Cohort Graduation Rate



## 4th-Graders Scored "Not Proficient" in Reading

In San Joaquin County, 65.6% of children in grade 4 are scoring "not proficient" or worse in reading.

Students Scoring 'Not Proficient' or Worse, Percent

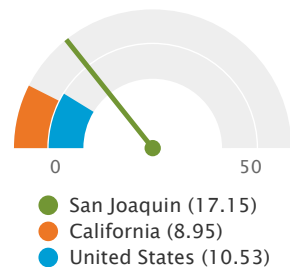


## Head Start Centers & Preschool Enrollment

In San Joaquin County, there are 17.15 Head Start program facilities per 10,000 children under age 5.

Of preschool age children, 43.96% are enrolled in public or private nursery/preschool. Enrollment varies by census tract, ranging from 0.00% to 100.00%.

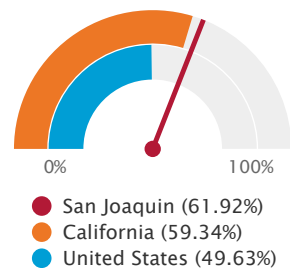
Head Start Programs Rate (Per 10,000 Children Under Age 5)



## Free & Reduce Price Lunch

In San Joaquin County, 61.92% of public school students are eligible for Free/Reduced Price lunch. This assesses vulnerable populations which are more likely to have multiple health access, health status, and social support needs.

Percentage of Students Eligible for Free or Reduced Price School Lunch



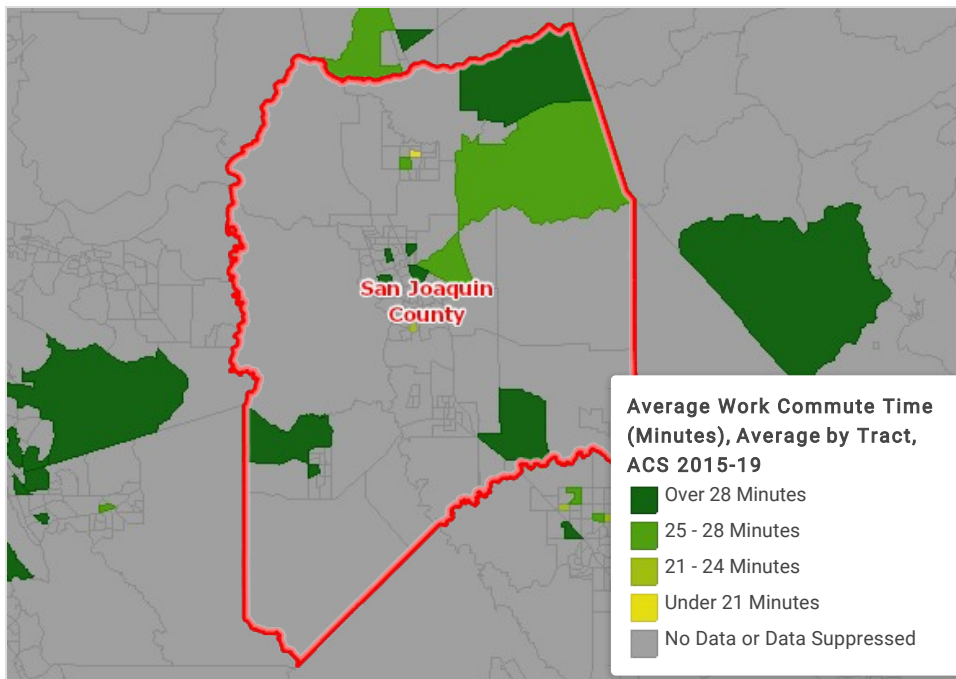
- [Read about how San Antonio is funding an all-day preschool program for low-income kids.](#)
- [Watch a video about how one school district is working to become trauma-sensitive.](#)

# Transportation

Latinos are disproportionately burdened by auto-dependent transportation networks and face unsafe streets, sidewalks, and bike lanes, lack of access to public transit, and significant disparity in time spent commuting and motor vehicle fatalities and serious injuries. [LEARN MORE](#)

## Average Work Commute Time

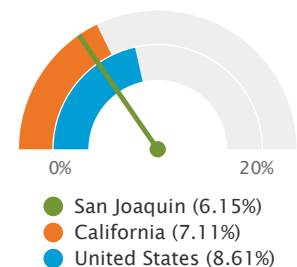
In San Joaquin County, the average commute time is 34.23 minutes; however, some families are commuting over 60 minutes to work. When families spend more time commuting, they have less time to spend investing in health and education.



## Households with No Motor Vehicle

In San Joaquin County, 6.15% of households do not have a motor vehicle. Older populations, Latinos and people of color, and people in low-income communities are disproportionately burdened by lack of safe streets and pedestrian fatalities and serious injuries, which are preventable. In your county, 1.78% of workers travel to work by walking or biking, and 1.67% commute by public transit.

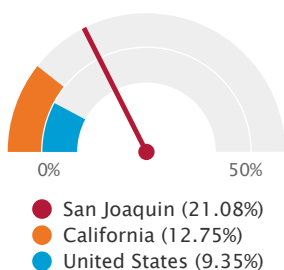
Percentage of Households with No Motor Vehicle



## Population Commuting Over 60 Minutes to Work

In San Joaquin County, 21.08% of people commute over 60 minutes to work. In some areas 0.35% commute over 60 minutes to work, while in other areas, 48.09% commute over 60 minutes.

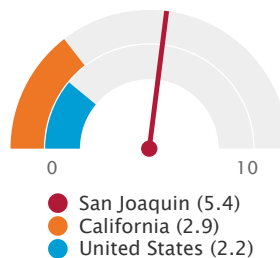
Percentage of Workers Commuting More than 60 Minutes



## Pedestrian-Motor-Vehicle Crash Mortality

In San Joaquin County, 5.4 pedestrian deaths are due to motor vehicle crashes per 100,000 population.

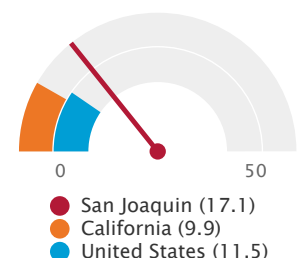
Pedestrian Motor Vehicle Mortality, Crude Death Rate (Per 100,000 Pop.)



## Motor Vehicle Crash Mortality Rate

In San Joaquin County, 17.1 deaths are due to motor vehicle crashes per 100,000 population. See page 1 for disparities in motor-vehicle crash death rate among Latinos and non-Latinos.

Motor Vehicle Crash Mortality, Age-Adjusted Death Rate (Per 100,000 Pop.)



- [Watch a video about how a city official pushed for more funding for buses.](#)
- [Read about a mobility advocacy group that conducted a transit equity analysis.](#)



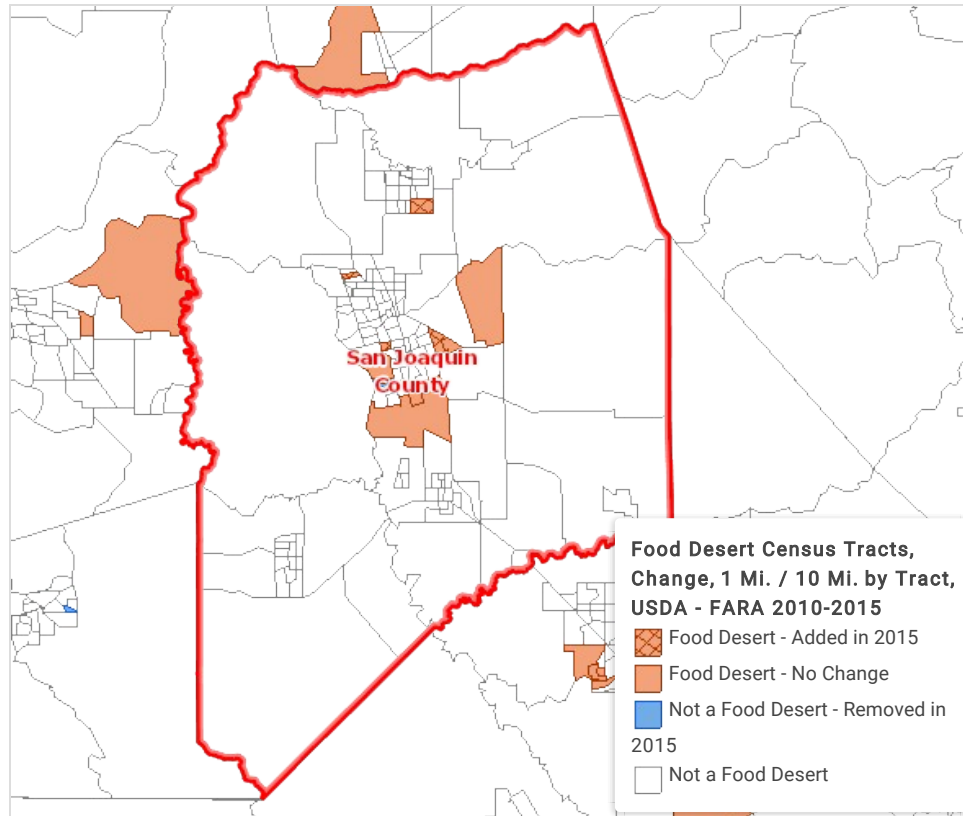


# Food

U.S Latino kids face unhealthy neighborhood food environments with fewer grocery stores and more fast food. [LEARN MORE](#)

## Food Desert

In San Joaquin County, 14 of census tracts are food deserts, meaning 77,691 people are living in food deserts.

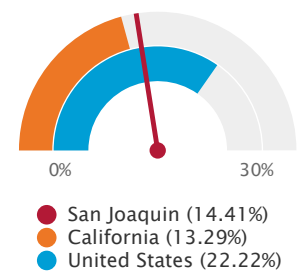


## Low Food Access & Food Insecure Population & Children

In San Joaquin County, 14.41% of the population has low food access, defined as living more than 1/2 mile from the nearest supermarket, supercenter, or large grocery store.

In your county, 12.80% of households are food insecure (unable to meet food needs during at least 7 months of the year). Among children, 20.30% are food insecure. These indicators provide measures of healthy food access and environmental influences on dietary behaviors.

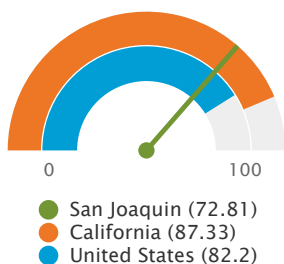
Percent Population with Low Food Access



## Fast Food Restaurant Rate

In San Joaquin County, there are 72.81 fast food establishments per 100,000 people.

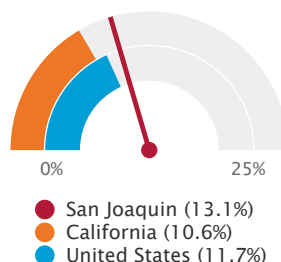
Fast Food Restaurants, Rate per 100,000 Population



## Population Receiving SNAP Benefits

In San Joaquin County, 13.1% of the population is receiving Supplemental Nutrition Assistance Program (SNAP) benefits.

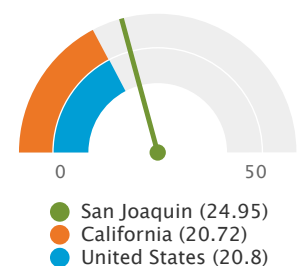
Percentage of Total Population Receiving SNAP Benefits



## Grocery Store Rate

In San Joaquin County, there are 24.95 grocery stores per 100,000 population.

Grocery Stores, Rate per 100,000 Population



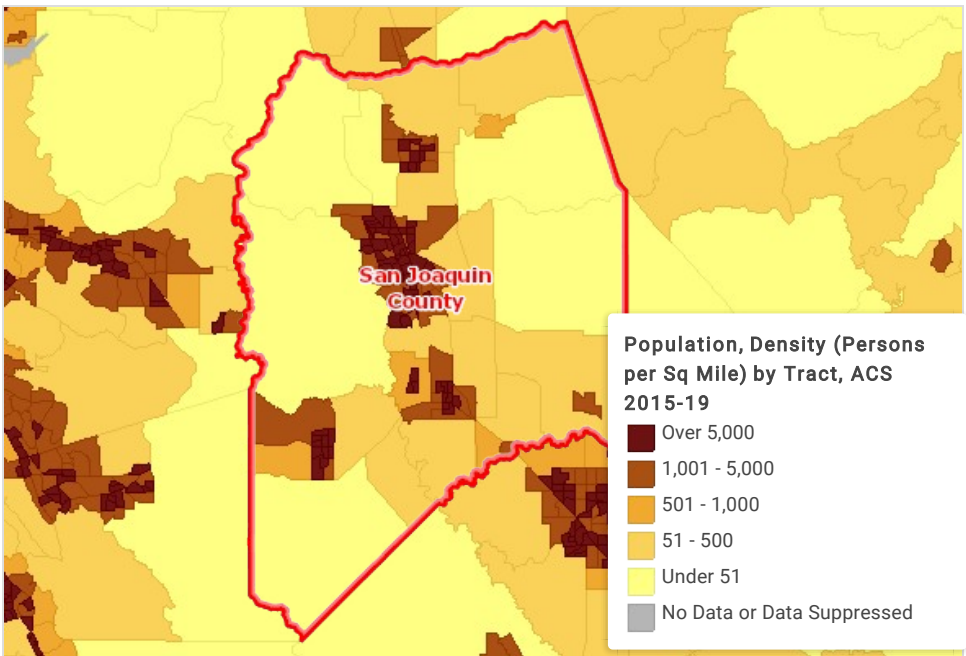
- Watch a video how a nutrition leader pushed for school food pantries!
- Watch a video about a filmmaker who helps bodegas improve healthy food and drink options.

# Environment

Latino communities have fewer safe sidewalks and parks, and more pollutants, and Latino workers and families are more vulnerable to climate-related extreme weather events. [LEARN MORE](#)

## Population Density & Urban and Rural Population

In San Joaquin County, the average population density is 533 person per square mile. Population density is higher in some urban areas and lower in rural areas. 91.53% of the population is living in an urban area.



## Workers, Construction, Manufacturing, & Agriculture, Forestry or Mining

In San Joaquin County, of the total working population (266,694), 6.47% work in construction; 8.86% work in manufacturing; and 5.59% work in agriculture, forestry or mining.

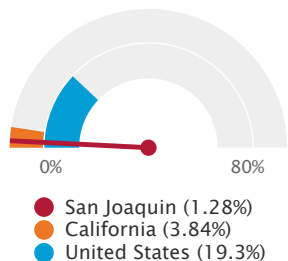
Workers in these fields, often Latinos, are at increased risk of exposure to hazards, toxins, and stressors; however, companies in these industries do not always provide health insurance. Latino workers are at a high risk for injury and can lack access to medical treatment.

In San Joaquin County, 53.66% of workers are insured through their employers; however, disparities exist. Employer provided insurance varies by census tract, ranging from 9.97% to 76.56%.

## Tree Canopy

In San Joaquin County, 1.28% area is covered by tree canopy.

Population Weighted Percentage of Report Area Covered by Tree Canopy



## Air Toxics Exposure Cancer Risk Rate & Respiratory Hazard Index

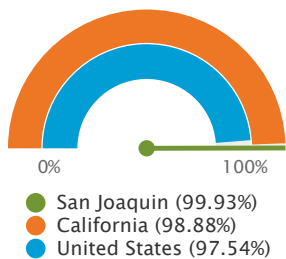
In San Joaquin County, the cancer risk associated with air toxics exposure is 33.53 per 1 million population. The rate varies from 27.74 in one census tract to 40.00 in another census tract.

The Respiratory Hazard Index Score for San Joaquin County is 0.59. Scores over 1.0 indicate a potential for adverse health effects.

## Broadband Access

In San Joaquin County, 99.93% of the population has access to high-speed internet. Access to technology opens up opportunities for employment and education.

Percentage of Population with Access to Broadband Internet (DL Speeds > 25MBPS)



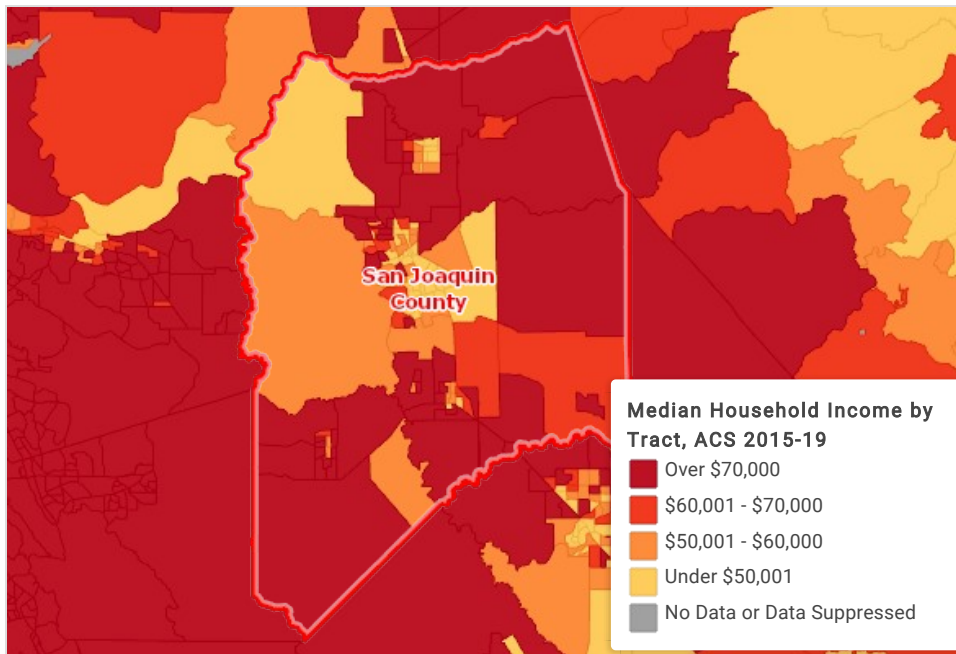
- Watch a video about a Latino park ranger changing the system to attract more Latinos to parks.
- Watch a video about a bike advocacy group that fought to protect their trail.

# Social Economic Status

A history of multi-level racism, discrimination, and segregation contributes to an inequitable distribution of resources and services, like affordable housing and childcare, a widening socioeconomic gap, and disparities in mental and physical health outcomes among Latinos. [LEARN MORE](#)

## Median Household Income

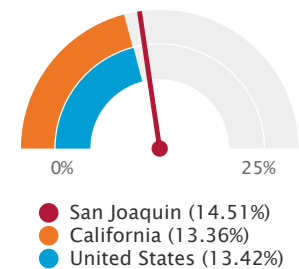
In San Joaquin County, the median household income is \$64,432.



## Population Below Poverty Level

In San Joaquin County, 14.51% of individuals are living in households with income below the Federal Poverty Level (FPL). Poverty creates barriers to access including health services, healthy food, and other necessities that contribute to poor health status.

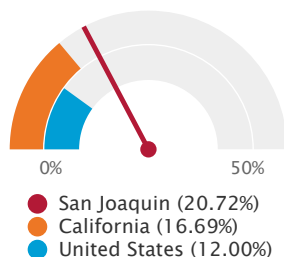
Population in Poverty, Percent



## No High School Diploma

In San Joaquin County, there are 20.72% of persons aged 25 and older do not have a high school diploma (or equivalency). Higher educational attainment is linked to positive health, social, and economic outcomes.

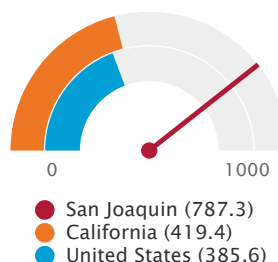
Population Age 25+ with No High School Diploma, Percent



## Violent Crime Rate

In San Joaquin County, 787.3 violent crime offenses are reported to law enforcement per 100,000 residents. This includes homicide, rape, robbery, and aggravated assault.

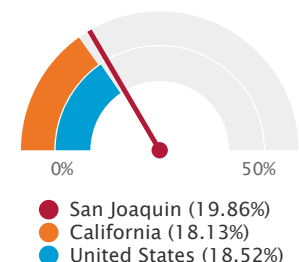
Violent Crime Rate (Per 100,000 Pop.)



## Children Below Poverty Level

In San Joaquin County, 39,563 of children aged 0-17 are living in households with income below the Federal Poverty Level. Poverty, unemployment, and lack of educational achievement affect access to care and a family's and community's ability to engage in healthy behaviors.

Percent Population Under Age 18 in Poverty



- [Read about how past discriminatory mortgage lending practices impact health and wealth today.](#)
- [Read about how the demand for walkable urban places is rising.](#)

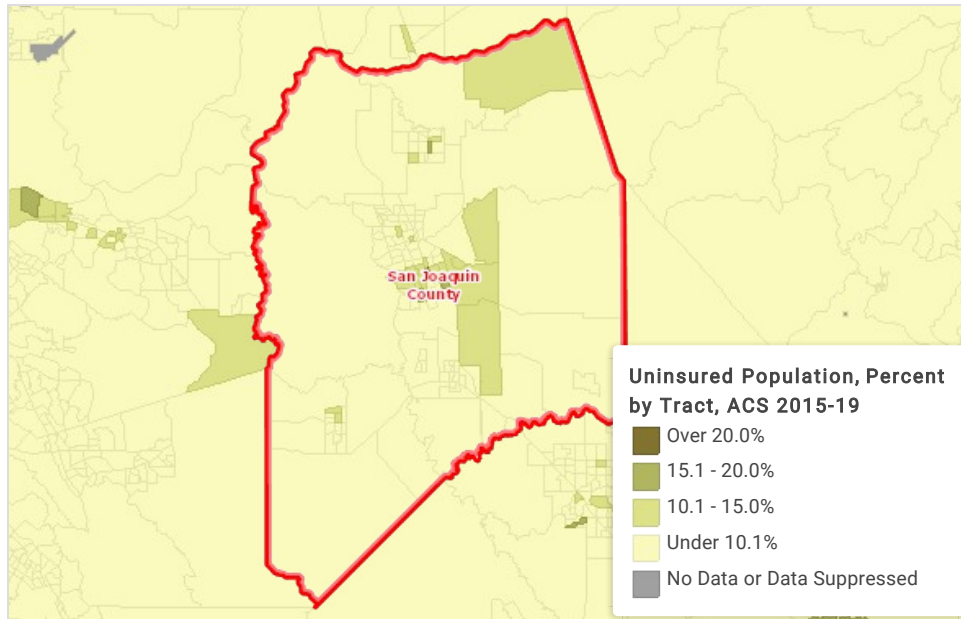


# Healthcare

Latino families face inequities in access to mental and physical health care across all stages of the healthcare spectrum—prevention, diagnosis, treatment, and hospice. [LEARN MORE](#)

## Uninsured Population

In San Joaquin County, 6.43% of population are uninsured.

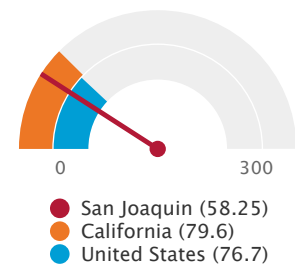


## Access to Primary and Prenatal Care Rate

In San Joaquin County, there are 58.25 primary care physicians per 100,000 population.

In your county, of women do not obtain prenatal care during their first trimester of pregnancy.

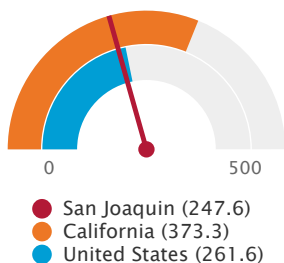
Primary Care Providers, Rate per 100,000 Population



## Access to Mental Health Providers Rank

In San Joaquin County, there are 247.6 mental health care providers per 100,000 population.

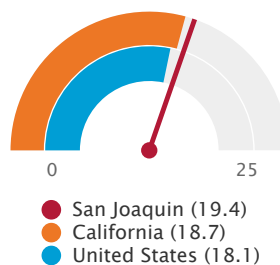
Mental Health Care Provider Rate (Per 100,000 Population)



## 30-Day Hospital Readmissions

In San Joaquin County, 19.4% of Medicare fee-for-service beneficiaries are readmitted to a hospital within 30 days of an initial hospitalization discharge.

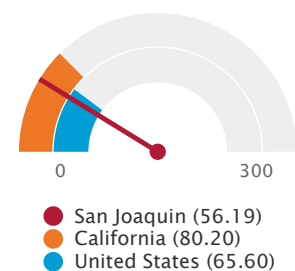
Rate of 30-Day Hospital Readmissions among Medicare Beneficiaries (%)



## Access to Dentists Rate

In San Joaquin County, there are 56.19 dentists per 100,000 population.

Dentists, Rate per 100,000 Population



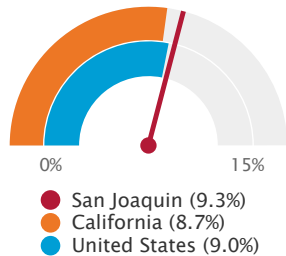
- [Read about a pediatrician who created a trauma-informed, school-based intervention.](#)
- [Read about 9 strategies to improve intersection of transportation and dialysis.](#)

# Physical and Mental Health

Latinos face disparities in numerous chronic and infectious diseases. [LEARN MORE](#)

## Diabetes

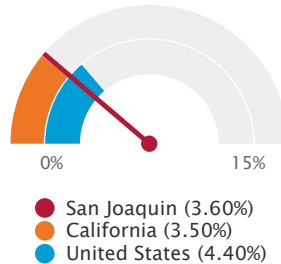
Percentage of Adults with Diagnosed Diabetes  
(Age-Adjusted), 2019



In San Joaquin County, 9.3% of adults aged 20 and older have been diagnosed with diabetes.

## Heart Disease

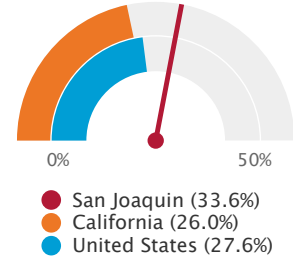
Percent Adults with Heart Disease



In San Joaquin County, 3.60% of adults aged 18 and older have been diagnosed with coronary heart disease.

## Obesity

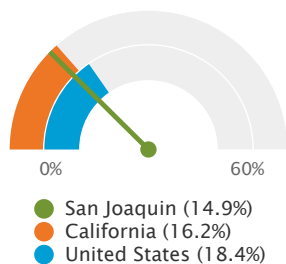
Percentage of Adults Who Have Obesity  
(BMI > 30.0), 2017



In San Joaquin County, 33.6% of adults aged 20 and older self-report that they have a Body Mass Index (BMI) greater than 30 (the medical definition of having obesity).

## Depression-Medicare

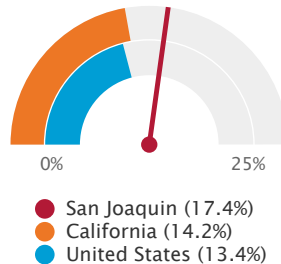
Percentage of Medicare Beneficiaries with Depression



In San Joaquin County, 14.9% of Medicare fee-for-service population have been diagnosed with depression.

## Asthma Prevalence

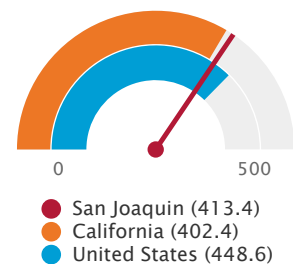
Percent Adults with Asthma



In San Joaquin County, 17.4% of adults aged 18 and older have been diagnosed with asthma.

## Cancer Incidence

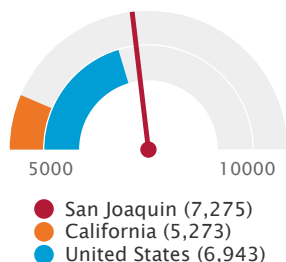
Cancer Incidence Rate  
(Per 100,000 Pop.)



In San Joaquin County, the cancer incidence rate is 413.4 cases per 100,000 population per year.

## Premature Death Mortality

Years of Potential Life Lost,  
Rate per 100,000 Population



In San Joaquin County, 7,275 years of potential life lost before age 75 per 100,000 population for all causes of death.

## Medicare Beneficiaries with Alzheimer's

In San Joaquin County, 8.9% of the Medicare fee-for-service population have been diagnosed with Alzheimer's disease.

## Coronary Heart Disease Mortality

In San Joaquin County, the rate of death due to coronary heart disease is 86.4 per 100,000 population.

## Inadequate Social Emotional Support

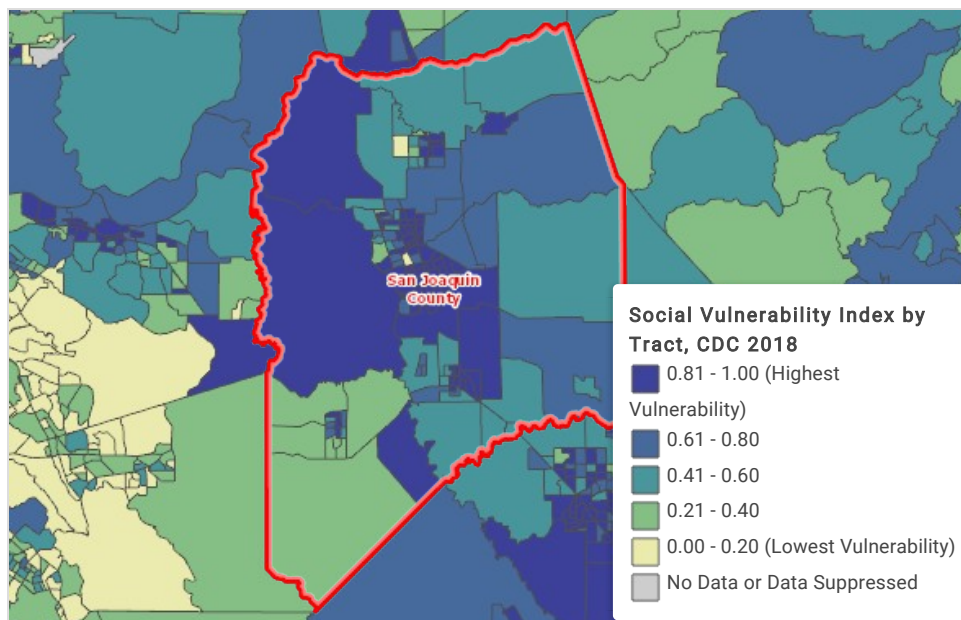
In San Joaquin County, 29.50% of adults aged 18 and older report that they receive insufficient social and emotional support.

# COVID-19

A number of factors contribute to social vulnerability, and may weaken a communities' ability to respond to hazardous events, such as pandemics.

## Social Vulnerability Index

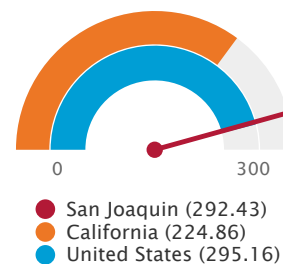
In San Joaquin County, the Social Vulnerability Index Score is 0.89. The least vulnerable score is 0. The most vulnerable score is 1. Your area's score shows a HIGH level of vulnerability. Factors like poverty, lack of access to transportation and crowded housing may weaken a community's ability to prepare for and respond to hazardous events, such as natural disasters or disease outbreaks. Reducing social vulnerability can decrease both human suffering and economic loss.



## COVID-19 Deaths

San Joaquin County has 2,201 total confirmed COVID-19 deaths as of 04/01/2022. The local mortality rate is 292.43 per 100,000 population, which is MORE than the state average of 224.86.

COVID-19 Deaths, Crude Rate per 100,000 Population



## COVID-19 Vaccinations

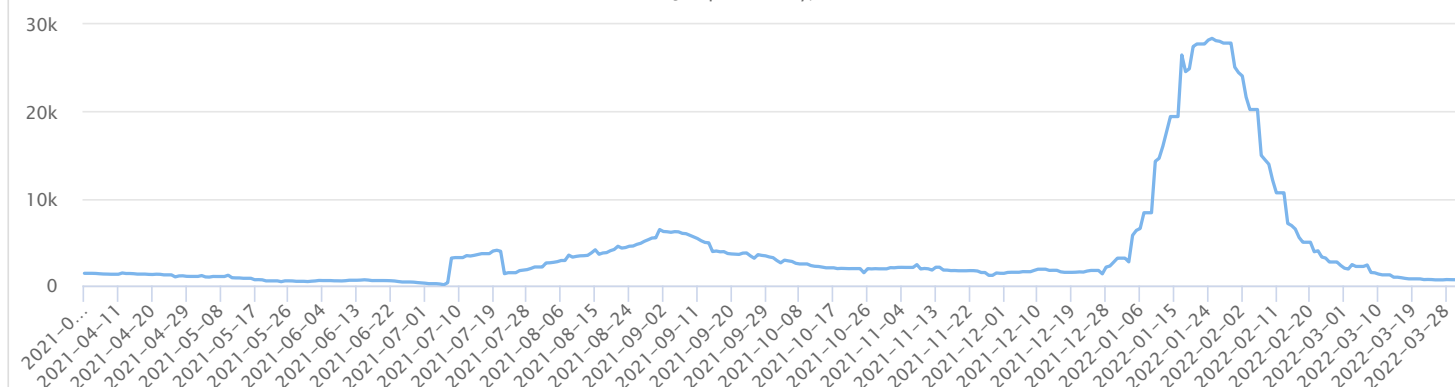
In San Joaquin County, 70.10% of residents are fully vaccinated against COVID-19 as of 03/31/2022, compared to 79.4% in the state. 7.12% of local residents are hesitant against getting the vaccine. This is due to historical trauma/racism, mistrust of government, **misinformation**, and other factors.

## Total COVID-19 Cases and New COVID-19 Cases in the Last 14 Days

San Joaquin County has 175,487 confirmed COVID-19 cases and a confirmed case rate of 23,315.57 per 100,000 population as of 04/01/2022. There were 19.10% LESS cases in the last 14 days (03/17/2022 - 03/31/2022) than 15-28 days ago. This time span comparison is important because it indicates a growing or declining case rate. [Find the latest Latino COVID-19 case and death rates](#), and [Latino vaccination rates in your state](#).

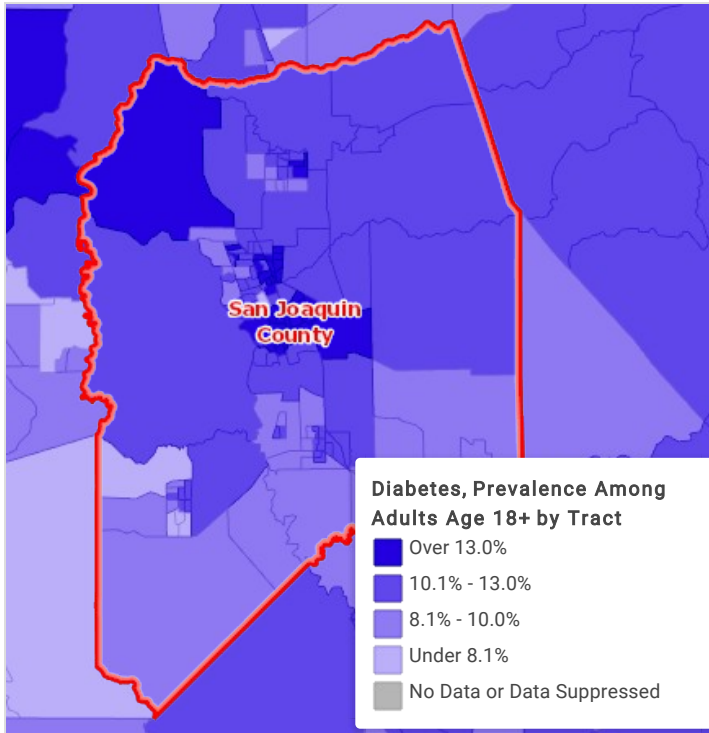
### COVID-19 Cases in the Last 14 Days, Daily Trends

San Joaquin County, CA

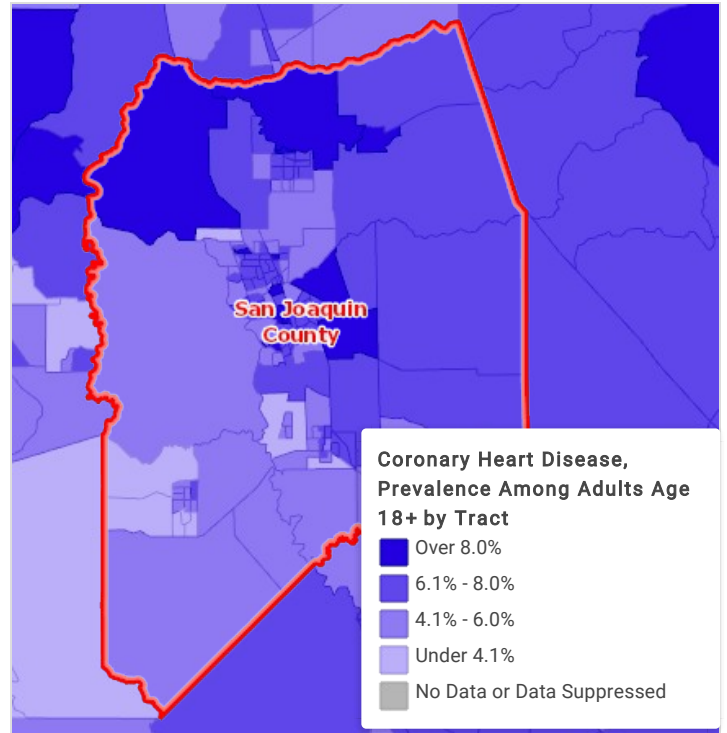


# 500 Cities

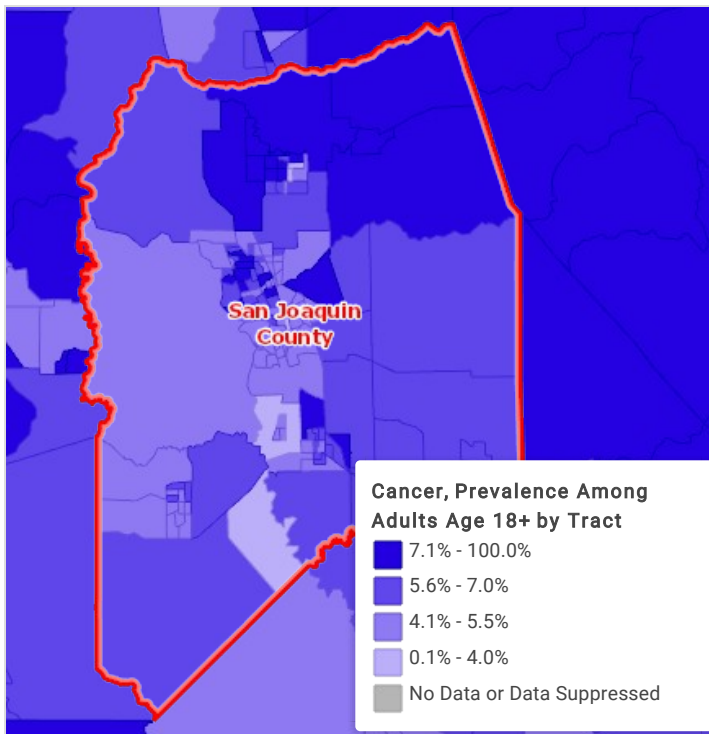
## Diabetes



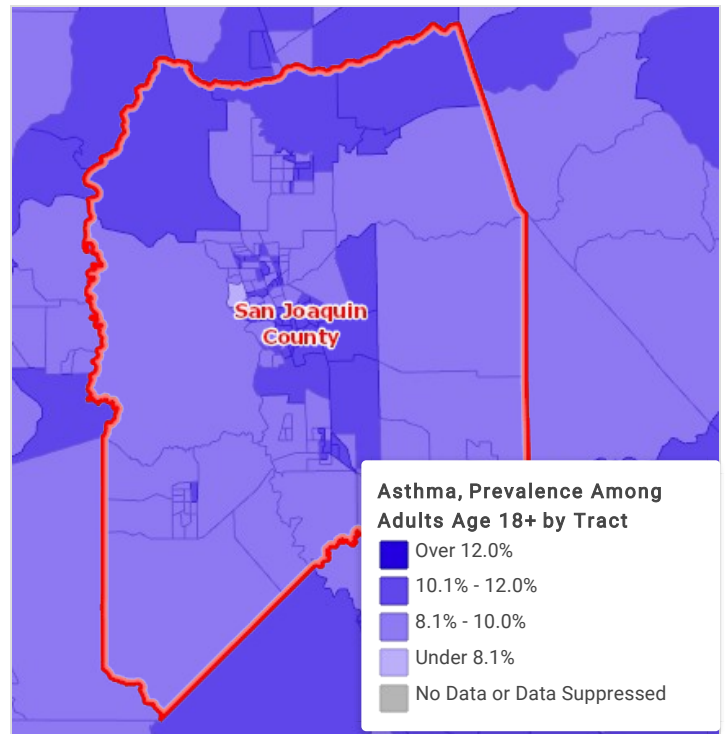
## Coronary Heart Disease



## Cancer Prevalence



## Asthma



# You Know the Issues. Now What?

## Share This Report!

Email this report to colleagues and community leaders; share it on social media; and bring printed copies to school or community meetings.

Email This Report!

Explore **case studies and stories** of successful change-makers.

Explore **research and resources** to help you build your case.

Email Salud America! at [saludamerica@uthscsa.edu](mailto:saludamerica@uthscsa.edu).





# Sources

Page	Indicator	Source
1	Population	US Census Bureau, <a href="#">American Community Survey</a> . 2015-19.
1	Children in Poverty	US Census Bureau, <a href="#">American Community Survey</a> . 2015-19.
1	Median Household Income	US Census Bureau, <a href="#">American Community Survey</a> . 2015-19.
1	No High School Diploma	US Census Bureau, <a href="#">American Community Survey</a> . 2015-19.
1	Uninsured Population	US Census Bureau, <a href="#">American Community Survey</a> . 2015-19.
1	Teen Birth Rate	Centers for Disease Control and Prevention, <a href="#">National Vital Statistics System</a> . Accessed via <a href="#">CDC WONDER</a> . US Department of Health & Human Services, <a href="#">Health Indicators Warehouse</a> . 2006-12.
1	Asthma Prevalence	Centers for Disease Control and Prevention, <a href="#">Behavioral Risk Factor Surveillance System</a> . Additional data analysis by <a href="#">CARES</a> . 2011-12.
1	Infant Mortality	US Department of Health & Human Services, Health Resources and Services Administration, <a href="#">HRSA - Area Health Resource File</a> . 2006-10.
1	Mortality - Cancer	Centers for Disease Control and Prevention, <a href="#">National Vital Statistics System</a> . Accessed via <a href="#">CDC WONDER</a> . 2016-2020.
1	Motor Vehicle Crash Death Rate	Centers for Disease Control and Prevention, <a href="#">National Vital Statistics System</a> . Accessed via <a href="#">CDC WONDER</a> . 2016-2020.
1	Youth Obesity (state)	Child and Adolescent Health Measurement Initiative, <a href="#">National Survey of Children's Health</a> . 2018.
2	Cost-Burdened Household Tenure	US Census Bureau, <a href="#">American Community Survey</a> . 2015-19.
2	Renter-Occupied Housing	US Census Bureau, <a href="#">American Community Survey</a> . 2015-19.
2	Housing Cost Burden	US Census Bureau, <a href="#">American Community Survey</a> . 2015-19.
2	Severely Housing Cost-Burdened	US Census Bureau, <a href="#">American Community Survey</a> . 2015-19.
2	Substandard Housing	US Census Bureau, <a href="#">American Community Survey</a> . 2015-19.
2	Hours per Week at Average Wage to Afford 2-Bedroom	<a href="#">National Low Income Housing Coalition</a> . 2021.
2	Mortgage Lending	Federal Financial Institutions Examination Council, <a href="#">Home Mortgage Disclosure Act</a> . Additional data analysis by <a href="#">CARES</a> . 2014.
3	High School Diploma	US Census Bureau, <a href="#">American Community Survey</a> . 2015-19.

Page	Indicator	Source
3	Head Start	US Department of Health & Human Services, <a href="#">HRSA - Administration for Children and Families</a> . 2019.
3	Enrollment in School, Children (Age 3-4)	US Census Bureau, <a href="#">American Community Survey</a> . 2013-2017.
3	High School Graduation	US Department of Education, <a href="#">EDFacts</a> . Additional data analysis by <a href="#">CARES</a> . 2018-19.
3	Young People Not in School and Not Working	US Census Bureau, <a href="#">American Community Survey</a> . 2015-2019.
3	4th-Graders Scored "Not Proficient" in Reading	US Department of Education, <a href="#">EDFacts</a> . Additional data analysis by <a href="#">CARES</a> . 2018-19.
3	Free & Reduced Price Lunch	National Center for Education Statistics, <a href="#">NCES - Common Core of Data</a> . 2019-20.
4	Average Work Commute Time	US Census Bureau, <a href="#">American Community Survey</a> . 2015-19.
4	Households with No Motor Vehicle	US Census Bureau, <a href="#">American Community Survey</a> . 2015-19.
4	Workers Travel to Work by Walking or Biking	US Census Bureau, <a href="#">American Community Survey</a> . 2015-19.
4	Workers Travel to Work by Public Transit	US Census Bureau, <a href="#">American Community Survey</a> . 2015-19.
4	Population Commuting Over 60 Minutes	US Census Bureau, <a href="#">American Community Survey</a> . 2015-19.
4	Pedestrian-Motor-Vehicle Crash Mortality	US Department of Transportation, National Highway Traffic Safety Administration, <a href="#">Fatality Analysis Reporting System</a> . 2015-2019.
4	Motor Vehicle Crash Mortality Rate	Centers for Disease Control and Prevention, <a href="#">National Vital Statistics System</a> . Accessed via <a href="#">CDC WONDER</a> . 2016-2020.
5	Food Desert	US Department of Agriculture, Economic Research Service, <a href="#">USDA - Food Access Research Atlas</a> . 2019.
5	Food Insecure Population & Children	US Department of Agriculture, Economic Research Service, <a href="#">USDA - Food Access Research Atlas</a> . 2019.
5	Low Food Access Tract	<a href="#">Feeding America</a> . 2017.
5	Fast Food Restaurant rate	US Census Bureau, <a href="#">County Business Patterns</a> . Additional data analysis by <a href="#">CARES</a> . 2019.
5	Population Receiving SNAP Benefits	US Census Bureau, <a href="#">Small Area Income and Poverty Estimates</a> . 2019.
5	Grocery Store Rate	US Census Bureau, <a href="#">County Business Patterns</a> . Additional data analysis by <a href="#">CARES</a> . 2019.
6	Population Density	US Census Bureau, <a href="#">American Community Survey</a> . 2015-19.

Page	Indicator	Source
6	Urban and Rural Population	US Census Bureau, <a href="#">Decennial Census</a> . 2010.
6	Workers, Construction, Manufacturing, & Agriculture, Forestry or Mining	US Census Bureau, <a href="#">American Community Survey</a> . 2015-19.
6	Insured, Employer Provided Insurance	US Census Bureau, <a href="#">American Community Survey</a> . 2015-2019.
6	Tree Canopy	Multi-Resolution Land Characteristics Consortium, <a href="#">National Land Cover Database</a> . 2016.
6	Air Toxics Exposure Cancer Risk	<a href="#">EPA National Air Toxics Assessment</a> . 2014.
6	Respiratory Hazard Index	<a href="#">EPA - National Air Toxics Assessment</a> . 2014.
6	Broadband Access	<a href="#">National Broadband Map</a> . Dec 2020.
7	Median Household Income	US Census Bureau, <a href="#">American Community Survey</a> . 2015-19.
7	Population Below Poverty Level	US Census Bureau, <a href="#">American Community Survey</a> . 2015-19.
7	High School Diploma	US Census Bureau, <a href="#">American Community Survey</a> . 2015-19.
7	Violent Crime Rate	Federal Bureau of Investigation, <a href="#">FBI Uniform Crime Reports</a> . Additional analysis by the <a href="#">National Archive of Criminal Justice Data</a> . Accessed via the <a href="#">Inter-university Consortium for Political and Social Research</a> . 2014&2016.
7	Children Below Poverty Level	US Census Bureau, <a href="#">American Community Survey</a> . 2015-19.
8	Uninsured Population	US Census Bureau, <a href="#">American Community Survey</a> . 2015-19.
8	Access to Primary Care Rate	US Department of Health & Human Services, Health Resources and Services Administration, <a href="#">HRSA - Area Health Resource File</a> . 2017.
8	Lack of Prenatal Care	Centers for Disease Control and Prevention, <a href="#">National Vital Statistics System</a> . Accessed via <a href="#">CDC WONDER</a> . Centers for Disease Control and Prevention, <a href="#">Wide-Ranging Online Data for Epidemiologic Research</a> . 2019.
8	Access to Mental Health Providers	Centers for Medicare and Medicaid Services, <a href="#">CMS - National Plan and Provider Enumeration System (NPPES)</a> . Accessed via <a href="#">County Health Rankings</a> . 2020.
8	30-Day Hospital Readmissions	Centers for Medicare and Medicaid Services, <a href="#">CMS - Geographic Variation Public Use File</a> . 2020.
8	Access to Dentists Rate	US Department of Health & Human Services, Health Resources and Services Administration, <a href="#">HRSA - Area Health Resource File</a> . 2015.
9	Diabetes	Centers for Disease Control and Prevention, <a href="#">National Center for Chronic Disease Prevention and Health Promotion</a> . 2019.

Page	Indicator	Source
9	Heart Disease	Centers for Disease Control and Prevention, <a href="#">Behavioral Risk Factor Surveillance System</a> . Additional data analysis by <a href="#">CARES</a> . 2011-12.
9	Obesity	Centers for Disease Control and Prevention, <a href="#">National Center for Chronic Disease Prevention and Health Promotion</a> . 2019.
9	Depression (Medicare Population)	Centers for Medicare and Medicaid Services, <a href="#">CMS - Geographic Variation Public Use File</a> . 2018.
9	Asthma Prevalence	Centers for Disease Control and Prevention, <a href="#">Behavioral Risk Factor Surveillance System</a> . Additional data analysis by <a href="#">CARES</a> . 2011-12.
9	Cancer Incidence	<a href="#">State Cancer Profiles</a> . 2014-18.
9	Premature Death Mortality	University of Wisconsin Population Health Institute, <a href="#">County Health Rankings</a> . 2017-2019.
9	Alzheimer's Disease	Centers for Medicare and Medicaid Services, <a href="#">CMS - Geographic Variation Public Use File</a> . 2018.
9	Coronary Heart Disease	Centers for Disease Control and Prevention, <a href="#">National Vital Statistics System</a> . Accessed via <a href="#">CDC WONDER</a> . 2016-2020.
9	Social & Emotional Support	Centers for Disease Control and Prevention, <a href="#">Behavioral Risk Factor Surveillance System</a> . Accessed via the <a href="#">Health Indicators Warehouse</a> . US Department of Health & Human Services, <a href="#">Health Indicators Warehouse</a> . 2006-12.
10	Social Vulnerability Index Score	Centers for Disease Control and Prevention and the National Center for Health Statistics, <a href="#">CDC - GRASP</a> . 2018.
10	COVID-19 Deaths	<a href="#">Johns Hopkins University</a> . Accessed via <a href="#">ESRI</a> . Additional data analysis by <a href="#">CARES</a> . 2022.
10	COVID-19 Vaccinations	Centers for Disease Control and Prevention and the National Center for Health Statistics, <a href="#">CDC - GRASP</a> . 2022.
10	COVID-19 Cases	<a href="#">Johns Hopkins University</a> . Accessed via <a href="#">ESRI</a> . Additional data analysis by <a href="#">CARES</a> . 2022.
10	COVID-19 Cases in the Last 14 Days	<a href="#">The New York Times</a> . Accessed via <a href="#">GitHub</a> . Additional data analysis by <a href="#">CARES</a> . 2022.
11	500 Cities	Centers for Disease Control and Prevention, <a href="#">Behavioral Risk Factor Surveillance System</a> . Accessed via the <a href="#">500 Cities Data Portal</a> . 2018.

Report card powered by the [Center for Applied Research and Engagement Systems \(CARES\)](#), University of Missouri.